

For Professionals

MED  **EL**

SAMBA 2

Hearing Made Simple.



hearLIFE

SAMBA 2

Hearing Made Simple.

Hear Anywhere
Automatically adjusts settings for optimal hearing whatever the situation.

Impressively Simple
Changing batteries and covers is fast and easy thanks to SAMBA 2's intuitive design.

Sleek and Stylish
With the lowest profile height on the market, it is easy to hide SAMBA 2 under hair.



All-Day Comfort
Stays in place with very little pressure on skin so it can be worn all-day long.



Ready for Water
Rain or shine, water-resistant SAMBA 2 is designed for every environment. The optional WaterWear cover provides complete water protection for swimming and watersports.

Everyday Convenience

SAMBA 2 for VIBRANT SOUNDBRIDGE and SAMBA 2 BB for BONEBRIDGE are all-in-one audio processors for middle ear and bone conduction implant recipients. With a lightweight design, snap-on attachment clips, and quick-change batteries, everyday handling is easy and intuitive. SAMBA 2 is so comfortable to wear and easy to handle that recipients might even forget they're wearing it.



Comfortable Hearing
With low pressure on the skin, SAMBA 2 is comfortable to wear while staying in place.



Long-Lasting Battery
With a battery life of approximately 8-10 days, SAMBA 2 provides reliable, long-lasting power.



Discreet Design
SAMBA 2 has both the lightest weight and the lowest profile height of any audio processor on the market, making it easy to hide.



Water-Resistant Design
With an IP rating of 54, SAMBA 2 is tough enough to endure everyday splashes, sweat and dust.



Easy Streaming
SAMBA 2 GO easily connects phones and other devices to SAMBA 2 for wireless streaming and hands-free calls.



Expressive Design Covers
With a snap and a click, one of the many interchangeable covers can be attached to quickly personalise SAMBA 2.



Life can be complicated,
but hearing doesn't
need to be.

Effortless Hearing

With SAMBA 2 there is no need to change programs. SAMBA 2's advanced sound technology automatically learns how to give people their best hearing possible in six different listening environments: Quiet, Speech in Quiet, Noise, Speech in Noise, Music, and Car.

Intelligent Learning

Intelligent Sound Adapter 2.0 learns individual hearing preferences for each of SAMBA 2's six environments. The result? A more personalised hearing experience in every situation.

Enhanced Noise Reduction

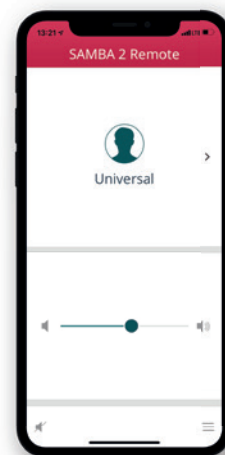
As well as reducing everyday disturbing noises, SAMBA 2 also filters out background speech noise. It even works fast enough to cut out disturbing noises between single words.

Speech Tracking

SAMBA 2 automatically detects a car environment and activates Speech Tracking, which adapts the microphones toward speech no matter what direction voices come from. Focusing on driving while conversing has never been so comfortable.

Automatic Adaption

SAMBA 2's microphones seamlessly adapt to whatever environment they are in, whether quiet or noisy. There is no need to switch programs, because SAMBA 2 does it all.



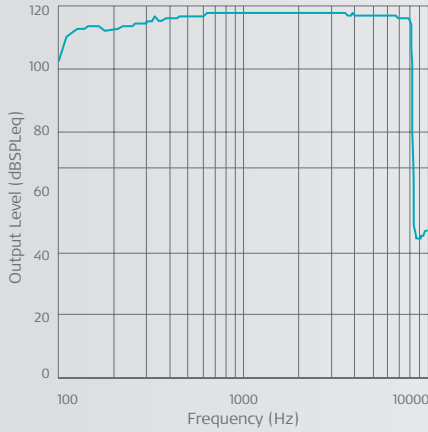
SAMBA 2 Remote

With the optional SAMBA 2 Remote app, there is no need to carry around an extra remote. Predefined SAMBA 2 settings can be managed directly from a smartphone. The app can also direct the audio processor to indicate battery life for extra peace of mind.

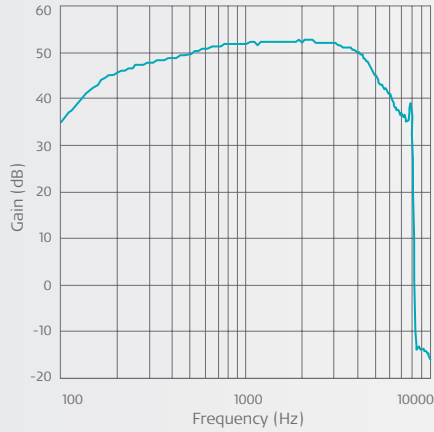
Frequency Response Curves

SAMBA 2 Hi

OSPL90 Frequency Response Curve

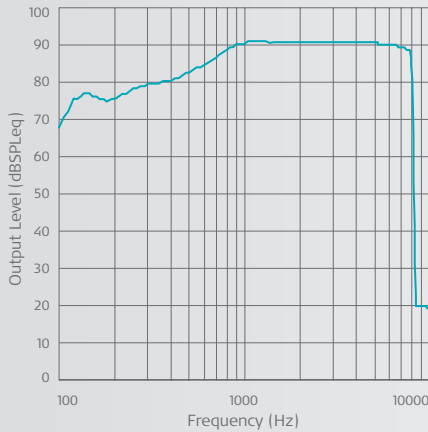


Full-On Gain Response Curve

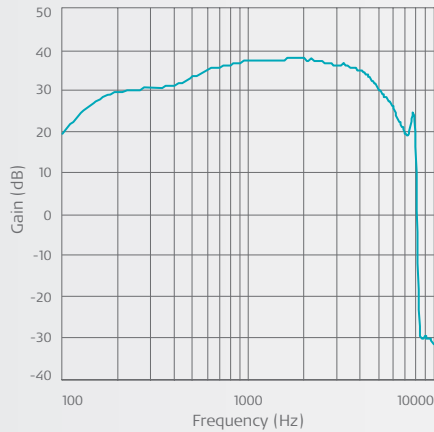


SAMBA 2 Lo

OSPL90 Frequency Response Curve

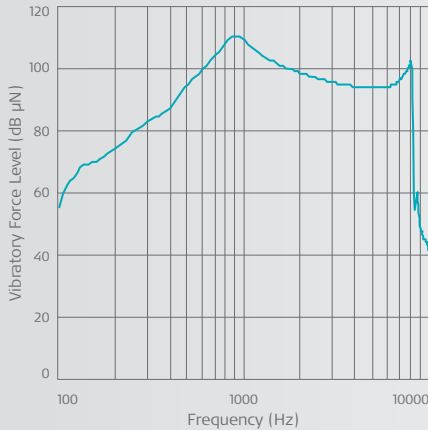


Full-On Gain Response Curve

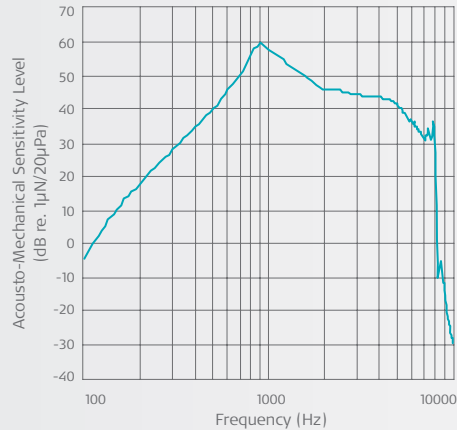


SAMBA 2 BB

OVFL Frequency Response Curve



Full-On Acousto-Mechanical Sensitivity Level Frequency Response



Technical Data

SAMBA 2 Single-Unit Audio Processor



SAMBA 2 Colour Options

7 covers in basic hair colours



10 Design Covers



SAMBA 2 Audio Processor

Dimensions

- Primarily circular shape
- Length: 36.4 mm (1 7/16 in) (battery compartment closed)
- Width: 30.4 mm (1 3/16 in)
- Height: 10.2 mm (13/32 in) (tallest point)
- Weight including battery and magnet (strength 1): 9.3 g

Material in Tissue Contact

- Eastman Tritan Copolyester MX731

Power Supply

- One non-rechargeable 675 zinc-air button cell with a nominal 1.4 V supply (IEC identifier: PR44)

Usage time

- SAMBA 2 Lo: up to 210 hours
- SAMBA 2 Hi: up to 151 hours
- SAMBA 2 BB: up to 133 hours

Audio Frequency Range

- 250 Hz to 8 kHz

Signal Processing

- 18-band digital equalizer
- 18 (each dual or syllabic) independent compression channels
- Intelligent Sound Adapter 2.0 with classifier
- Directional Speech Enhancement
- Speech and Noise Management
- Sound Smoothing
- Wind-Noise Reduction
- Feedback Stopper

Microphone Features

- Dual microphones
- Ambient Sound
- Adaptive directional microphones
- Speech Tracking
- Omnidirectional microphones

Control

- Turn off the system by opening the battery compartment about 5 mm

General

- 6 different magnet strengths
- Audio processor holding force (with magnet strength 3): 0.083 N
- 64 volume steps
- Made in Austria

Compatibility

- Backwards compatible to all VIBRANT SOUNDBRIDGE and BONEBRIDGE implant generations
- Battery Pill 675
- SYMFIT 8.0 software

Degrees of Protection Provided by Enclosures

- IP54
- IP68 with WaterWear for SAMBA

Operating Conditions

- Temperature: +5°C (+41°F) to +40°C (104 F)
- Relative humidity: 15% to 90%
- Atmospheric pressure: 70 to 106 kPa

Conditions of Transport and Storage Between Uses

- Temperature: -25°C (-13°F) to +60°C (+140°F)
- Relative humidity: 10% to 90% max.
- Atmospheric pressure: 70 to 106 kPa

Removable Parts

- Cover (including microphone protection membranes)
- Battery (not inserted on delivery)
- Attachment clips
- Magnet (only to be operated from professionals)

Optional Accessories

- SAMBA 2 GO (streaming device)
- SAMBA 2 Remote (remote app)

Expected Service Life

- The expected service life of the SAMBA 2 (incl. all accessories) as defined in IEC 60601-1 is 5 years.

Wireless Technology

- Connection between audio processor and implant
 - Type: NFM (near field magnetic induction)
 - Frequency: 120 kHz
 - Modulation type: Voice AM
 - Wireless range: 10 mm (3/8 in)
- Connection between audio processor and SAMBA 2 GO (streaming device)
 - Type: NFM (near field magnetic induction)
 - Frequency: 3.28 MHz
 - Modulation type: DPM (digital phase modulation)
 - Wireless range: 0.3 m (1 3/16 in)

